

Scaled data based on original data using
LM-79-08 Approved Method: Electrical and Photometric Measurements of Solid-State
Lighting Products

Test Report Prepared for
Cooper Lighting Solutions
(formerly Eaton)

Brand: LUMIERE

Report Number: P246990

Luminaire Tested: **203-SS-8LED3036-12-CS-LSL**

Issue Date: 3/3/2020

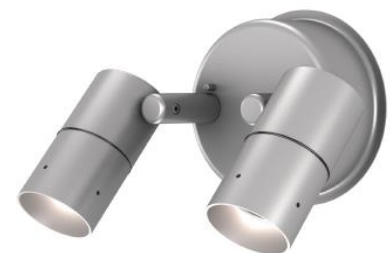
Test Information

Test Method: LM-79-08
Report Number: P246990
REPORT IS SCALED FROM IESNA LM-79-08 TEST DATA (G2-1802-569-45)
Test Lab: INNOVATION CENTER(G2)
Issue Date: 3/3/2020
Manufacturer: COOPER LIGHTING SOLUTIONS (FORMERLY EATON)
Product Line: LUMIERE
Catalog Number: 203-SS-8LED3036-12-CS-LSL
Description: CAMBRIA 203 LED LUMINAIRE, 8 WATT, 3000K CCT, 36 DEGREE WIDE OPTIC, REGRESSED HOOD SILVER, LINEAR SPREAD LENS
Light Source: (1) SORAA 3000K 90 CRI LED
SM16-07-36D-930-03
Ballast/Driver: (1) CHROMA POWER SUPPLY IN0004

Summary

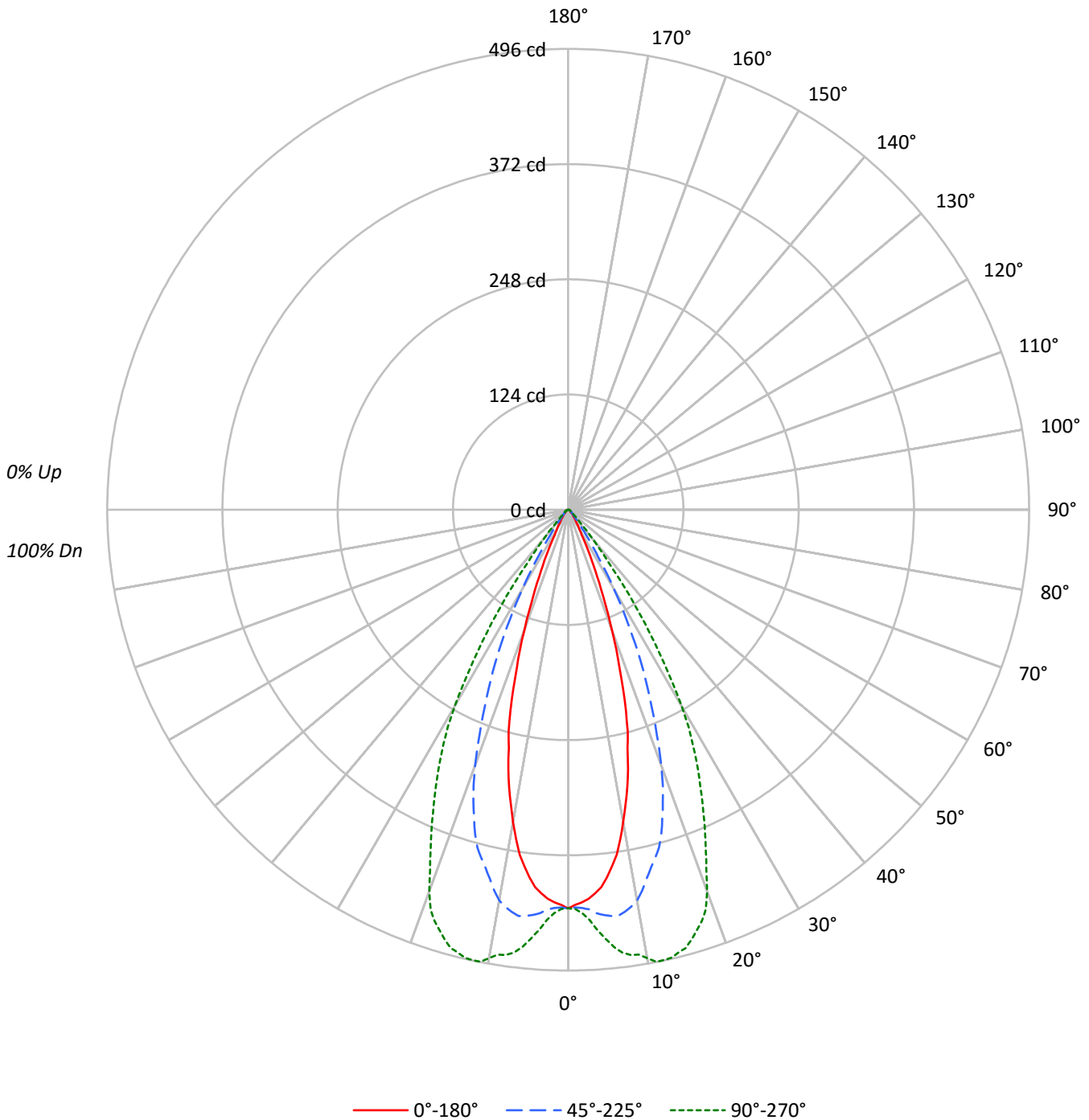
Lumens per Lamp: N/A
Luminaire Lumens: 281.4 lumens
Efficiency: N/A
Efficacy: 37.0 lumens/watt
Spacing Criteria (0/90/45): 0.55 / 1.02 / 0.74
Luminous Opening: Circular (Dia: 0.17' x H: 0')
CIE Type: Direct

Input Watts (W): 7.6
Input Voltage (V): NR
Input Current (A_{in}): NR
Voltage Rise (V): NR
Power Factor: NR
Total Harmonic Distortion (THDi): NR
Frequency (hertz): 60
Stabilization Time: NR
Operation Time: NR
Ambient Temperature (°C): NR
Test Distance: 25 FT



TEST NUMBER: P246990
CATALOG NUMBER: 203-SS-8LED3036-12-CS-LSL

Luminous Intensity Polar Plot





TEST NUMBER: P246990

CATALOG NUMBER: 203-SS-8LED3036-12-CS-LSL

COEFFICIENT OF UTILIZATION - ZONAL CAVITY METHOD:

RF	20					20					20					20					20	
RC	80					70					50					30					10	0
RW	70	50	30	10	70	50	30	10	50	30	10	50	30	10	50	30	10	50	30	10	0	
RCR																						
0	119	119	119	119	116	116	116	116	111	111	111	106	106	106	102	102	102	100				100
1	114	111	109	107	111	109	107	105	105	103	102	101	100	99	98	97	96	94				94
2	109	104	100	97	107	103	99	96	99	97	94	96	94	92	94	92	90	89				89
3	104	98	93	90	102	97	92	89	94	90	88	92	89	86	89	87	85	83				83
4	99	92	87	83	98	91	87	83	89	85	82	87	84	81	85	82	80	79				79
5	95	87	82	78	93	86	81	78	85	80	77	83	79	76	81	78	76	74				74
6	91	83	77	73	89	82	77	73	80	76	73	79	75	72	78	74	72	70				70
7	87	78	73	69	86	78	73	69	77	72	69	75	71	68	74	71	68	67				67
8	83	75	69	65	82	74	69	65	73	68	65	72	68	65	71	67	65	63				63
9	80	71	66	62	79	71	65	62	70	65	62	69	65	62	68	64	61	60				60
10	77	68	63	59	76	67	62	59	67	62	59	66	62	59	65	61	58	57				57

AVERAGE LUMINANCE (cd/sqm):

	0°	45°	90°
0°	211709	211709	211709
5°	201969	216876	229604
10°	170988	214073	245586
15°	126317	192463	249518
20°	72141	153575	229444
25°	32826	104250	184818
30°	13616	56059	138894
35°	8011	20840	75288
40°	5152	8566	25698
45°	3698	4954	9280
50°	3377	4068	4759
55°	3011	3011	3785
60°	2664	2664	3454
65°	2101	2101	2101
70°	1298	1298	2597
75°	1716	1716	1716
80°	0	2557	2557
85°	0	0	0



TEST NUMBER: P246990

CATALOG NUMBER: 203-SS-8LED3036-12-CS-LSL

ZONAL LUMENS:

Zone	Lumens	% Fixture
0°-10°	41.3	14.7
10°-20°	101.9	36.2
20°-30°	88.7	31.5
30°-40°	35.8	12.7
40°-50°	7.2	2.6
50°-60°	3.5	1.2
60°-70°	2.0	0.7
70°-80°	1.0	0.3
80°-90°	0.2	0.1
90°-100°	0.0	0.0
100°-110°	0.0	0.0
110°-120°	0.0	0.0
120°-130°	0.0	0.0
130°-140°	0.0	0.0
140°-150°	0.0	0.0
150°-160°	0.0	0.0
160°-170°	0.0	0.0
170°-180°	0.0	0.0
0°-30°	231.9	82.4
0°-40°	267.6	95.1
0°-60°	278.3	98.9
0°-90°	281.4	100.0
90°-120°	0.0	0.0
90°-150°	0.0	0.0
90°-180°	0.0	0.0
0°-180°	281.4	100.0

CANDELA DISTRIBUTION:

	0°	22.5°	45°	67.5°	90°	Flux
0°	429	429	429	429	429	
5°	408	418	438	456	464	37
15°	247	290	377	458	488	66
25°	60	82	192	300	340	29
35°	13	15	35	97	125	9
45°	5	6	7	11	13	4
55°	4	4	4	4	4	3
65°	2	2	2	2	2	2
75°	1	1	1	1	1	1
85°	0	0	0	0	0	0
90°	0	0	0	0	0	0



TEST NUMBER: P246990

CATALOG NUMBER: 203-SS-8LED3036-12-CS-LSL

CANDELA DISTRIBUTION (FULL):

	0°	22.5°	45°	67.5°	90°
0°	429.1	429.1	429.1	429.1	429.1
1°	425.5	427.3	428.2	429.1	429.9
2°	422.9	424.6	429.1	433.5	434.4
3°	419.3	422.9	430.8	439.7	442.4
4°	414.0	421.1	435.3	448.6	453.9
5°	407.8	417.5	437.9	456.5	463.6
6°	398.0	413.1	439.7	463.6	473.4
7°	386.5	405.1	440.6	469.8	480.5
8°	375.0	395.4	437.0	472.5	484.0
9°	359.0	383.9	432.6	469.8	484.9
10°	341.3	371.4	427.3	469.0	490.2
11°	323.6	356.4	417.5	470.7	495.6
12°	305.8	340.4	406.0	472.5	495.6
13°	286.3	324.5	395.4	469.0	494.7
14°	264.2	307.6	386.5	464.5	491.1
15°	247.3	289.9	376.8	458.3	488.5
16°	225.2	270.4	363.5	450.3	481.4
17°	202.1	249.1	346.6	440.6	473.4
18°	179.1	225.2	329.8	429.9	465.4
19°	159.6	199.5	312.9	419.3	454.8
20°	137.4	175.5	292.5	406.9	437.0
21°	118.8	152.5	271.3	390.9	414.9
22°	100.2	132.1	250.0	368.8	395.4
23°	85.1	113.5	229.6	344.0	376.8
24°	71.8	96.6	210.1	321.8	358.1
25°	60.3	82.4	191.5	300.5	339.5
26°	49.6	69.1	172.0	279.2	321.8
27°	39.9	56.7	152.5	260.6	304.1
28°	32.8	47.0	133.0	240.2	285.5
29°	27.5	39.0	116.1	219.0	266.8
30°	23.9	31.9	98.4	201.2	243.8
32.5°	16.8	21.3	60.3	149.8	181.7
35°	13.3	15.1	34.6	96.6	125.0
37.5°	9.8	11.5	20.4	55.0	70.0
40°	8.0	8.9	13.3	27.5	39.9
42.5°	7.1	7.1	9.8	16.0	20.4
45°	5.3	6.2	7.1	10.6	13.3
47.5°	4.4	5.3	6.2	7.1	8.0
50°	4.4	4.4	5.3	5.3	6.2
52.5°	3.5	4.4	4.4	4.4	5.3
55°	3.5	3.5	3.5	4.4	4.4
57.5°	2.7	2.7	3.5	3.5	3.5
60°	2.7	2.7	2.7	3.5	3.5
62.5°	1.8	1.8	2.7	2.7	2.7
65°	1.8	1.8	1.8	1.8	1.8



TEST NUMBER: P246990

CATALOG NUMBER: 203-SS-8LED3036-12-CS-LSL

CANDELA DISTRIBUTION (continued):

	0°	22.5°	45°	67.5°	90°
67.5°	1.8	1.8	1.8	1.8	1.8
70°	0.9	0.9	0.9	1.8	1.8
72.5°	0.9	0.9	0.9	0.9	0.9
75°	0.9	0.9	0.9	0.9	0.9
77.5°	0.9	0.9	0.9	0.9	0.9
80°	0.0	0.0	0.9	0.9	0.9
82.5°	0.0	0.0	0.0	0.9	0.9
85°	0.0	0.0	0.0	0.0	0.0
87.5°	0.0	0.0	0.0	0.0	0.0
90°	0.0	0.0	0.0	0.0	0.0

(END OF REPORT)